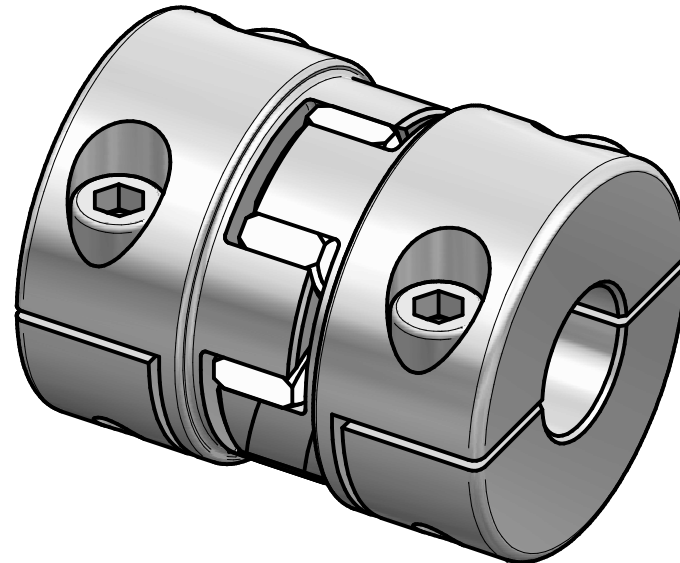
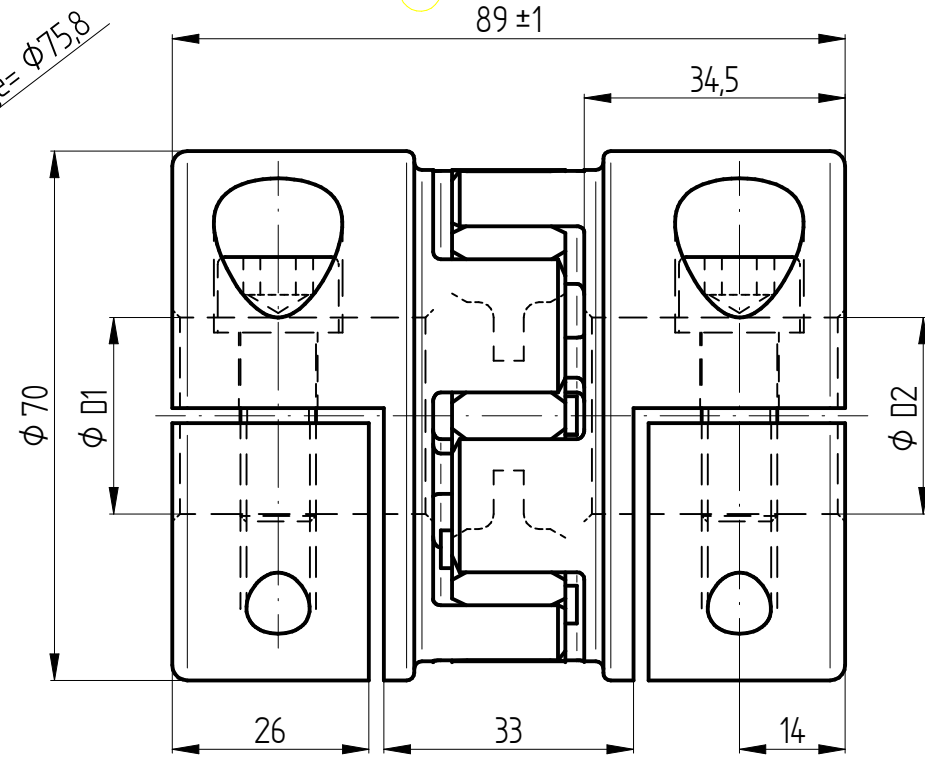
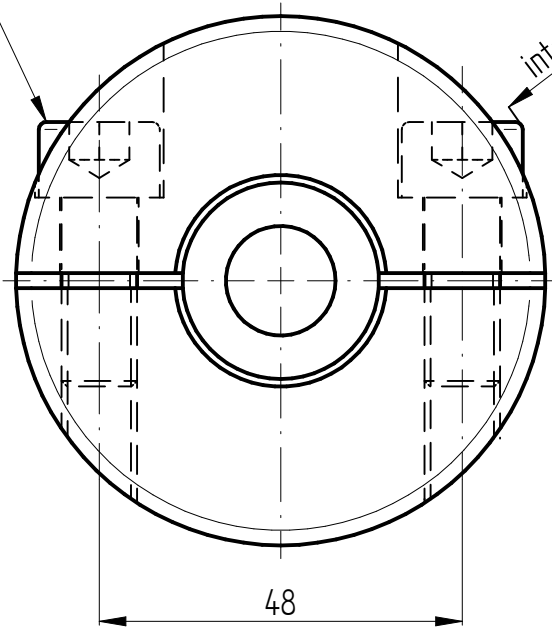


2x M10 - ISO 4762 - TA=65 Nm



Technical data:
 nominal torque: 200 Nm
 torsional stiffness: 1,5 Nm/arcmin
 moment of inertia: $0,48 \cdot 10^3 \text{ kgm}^2$
 max. axial shaft displacement: $\pm 1 \text{ mm}$
 max. lateral shaft displacement: 0,07 mm
 radial spring rate: 4600 N/mm
 temperature range: -30° up to $+120^\circ\text{C}$
 $D1/2 \text{ min/max} = \phi 17 / \phi 35 \text{ mm}$
 mass: approx. 0,7 kg

material:

- hubs: high-tensile strength aluminium
- elastomer spider: polyurethane 72 Shore - D
- screws: ISO 4762 - 12.9

| | | | | | |
|---------------|------------------------|------------------------|------|---|---------------------------------------|
| | | Werkstoffbezeichnung | | Werkstoffnummer | Maßstab |
| | | - | | - | |
| | | Rohteil-/Vorteilnummer | | Gewicht | 1:1 |
| | | - | | - kg | |
| | | gepr. | | 11.08.23 | IA |
| | | gez. | | 27.10.16 | Be |
| Passung | Abmaß | Datum | Name | Benennung | |
| DIN ISO 13715 | DIN ISO 2768-mK | | | Elastomer coupling with split-hub design EKH 200 | |
| | 0,5 ... 6 $\pm 0,1$ | D-63839-Kleinwallstadt | | Format A4 | Artikelnummer MB - 165 22888-e |
| | 6 ... 30 $\pm 0,2$ | | | | |
| | 30 ... 120 $\pm 0,3$ | | | | |
| | 120 ... 315 $\pm 0,5$ | | | | |
| | 315 ... 1000 $\pm 0,8$ | Ersatz für | | - | ersetzt durch |